

[View this email in your browser](#)



Inner South Canberra Community Council

Welcome to the ISCCC's new e-newsletter!

In this edition we'll provide some highlights from our public forum in February, a recap on the news from the Inner South, and mark some upcoming events.

February Public Forum

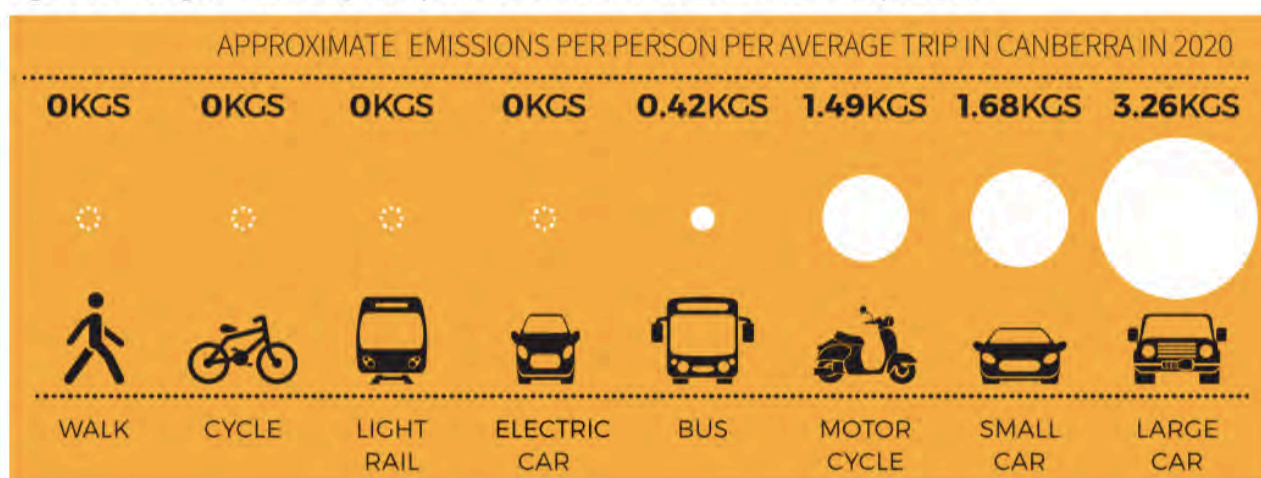
We hosted a public forum with Planning Minister Mick Gentleman and Climate Change Minister Shane Rattenbury to speak to the [Housing Choices](#) Paper and [Zero Net Emissions strategy](#) respectively.

Canberra is growing up and growing out. Six thousand people are added to our population every year. People are moving from interstate, and young Canberrans are choosing to stay. The ACT Government's new Housing Choices explores the kind of housing people want, so that we can plan and build a Canberra that meets people's needs.

Meanwhile, the ACT Government's new Climate Change Strategy puts Canberra on a path to reducing the city's net emissions to zero by 2045.

The transport sector presents one of the biggest challenges in the transition to net zero emissions.

Figure 5: Average emissions by transport mode in the ACT based on ACT transport data



Canberra is on track to sourcing all of our electricity from clean, renewable sources, which eliminates the biggest source of Canberra's pollution. The next step is harder as it requires everyone to do their bit - reducing emissions from vehicles, waste, gas and land use. Have you any ideas to share? Please share your ideas and concerns [here](#); consultation on the draft strategy is open until 9 April.

The 80+ crowd at the public forum did not question the need to drive down emissions, but asked how the city's planning and urban design could match this vision. Many people raised concerns about poor build quality, which meant dwellings were not meeting the government's minimum energy efficiency standards and did not guarantee buildings would last long into the future. Insufficient set-backs and plot ratios did not enable greenery to flourish, which meant an '[urban heat island effect](#)' risked creating suburbs several degrees hotter in an already heating climate. Similarly, urban sprawl and inadequate public transport meant cars would remain dominant for many Canberrans.

You can access the minutes from the Public Forum [here](#)

Upcoming events

Sat 24 March, 11am-4pm: Connect and Participate (CAP) Expo.

Where: Former Transport Depot (21 Wentworth Avenue, Kingston – where the old bus depot markets are held).

The Connect And Participate (CAP) Expo, now in its 5th year, is a community event that showcases the range of opportunities available for Canberrans to join interest groups and social clubs. From sports and recreation groups, to art, craft, music, dance, leisure, cultural, performing arts, hobby, social and 'special interest' groups, there is something for everyone at the CAP Expo. The day is always fun, with 'come and try activities', live music, performances, and food stalls.

The ISCCC will have a stall there and so drop by and say hello and let us know of any issues of interest.

SAVE THE DATE: Our next public forum is on April 10 and will focus on electricity, with speakers from the ACT Government, Evoenergy and ActewAGL (Eastlakes Football Club, 7pm)



kingstonbartonresidentsgroup • Fo
Telopea Park

kingstonbartonresidentsgroup Telopea Park 'creek' - doesn't take much to flood. This is why we've asked the ACT Government (since 2016) for a long term plan to 'renaturalise' the creek/drain. Attention to our local members - @andrewbarr @elizabethleecanberra @shanerattenbury @rachelss_mla #cbr #canberra #canberraweather #kingston_bartoncbr

cardifcollective Yes it should be there!

liam.cbr Assuming all are safe, I love it when the Telopea Park rapids are in full flow. That said, a Telopea Park wetlands, like there is at various points along the inner north's Sullivan's Creek, would be great.

patrick_j_pentony Adding a more natural flow with wetlands would also as to Lake Burley Griffins water quality



26 likes

7 DAYS AGO

Add a comment...

News from the Residents Associations

The Yarralumla Residents Association has been awarded more than \$8,000 in Commonwealth Government Stronger Community Grants. The funds have been used to co-fund the installation of a drinking fountain at the shops, a defibrillator at the Yarralumla Primary School and one at Weston Park, and two new park benches in the suburb.

The YRA is working also with the ACT Government to find solutions to traffic and parking issues across Yarralumla.

And welcome **Kingston and Barton Residents Group** to [Facebook](#)! They also have a beautiful Instagram account (pictured above).

ISCCC in the news

Are there too many high-rise projects in Canberra? [ISCCC Chair Marea Fatseas talks to 2cc](#)

Manuka oval media centre call-in not cricket, [say community groups](#)

Inner South Canberra in the news

[\\$17,000 to rent a hall in Oaks Estate?](#)

[Heritage list the Kingo?](#)

[When Basil became a hero](#)

[Fence off the Foreshore boardwalk?](#)

[What has rail got to do with the proposed waste incinerator in Fyshwick?](#)

[Why no new public housing for Red Hill?](#)

[Innovative developments](#) and a '[Powerhouse](#)' at the Kingston Foreshore

[Faulty beams and fire risks at the Bentley apartments in Forrest](#)

The ISCCC is a peak body representing the eight residents groups of Inner South Canberra:

Deakin Residents Association, Forrest Residents Group, Griffith Narrabundah Community Association, Kingston and Barton Resident Group, Oaks Estate Progress Association, Old Narrabundah Community Council, Red Hill Residents Group, Yarralumla Residents Association



Our mailing address is:

ISCCC · PO Box 3310 · Manuka · Canberra, Act 2603 · Australia

Want to change how you receive these emails?

You can [update your preferences](#) or [unsubscribe from this list](#).

This email was sent to <<Email Address>>

[why did I get this?](#) [unsubscribe from this list](#) [update subscription preferences](#)

MailChimp.