

The Urban Heat Island Effect and Urban Heat Mapping

ISCCC Public Forum
August 8, 2023

Beatrice M. Bodart-Bailey

RZ2: 15, 17 Lumeah Street,
Narrabundah.

Two blocks each with a single Fluffy
house: gardens with mature trees
demolished.

70% infill on top of existing
structures?



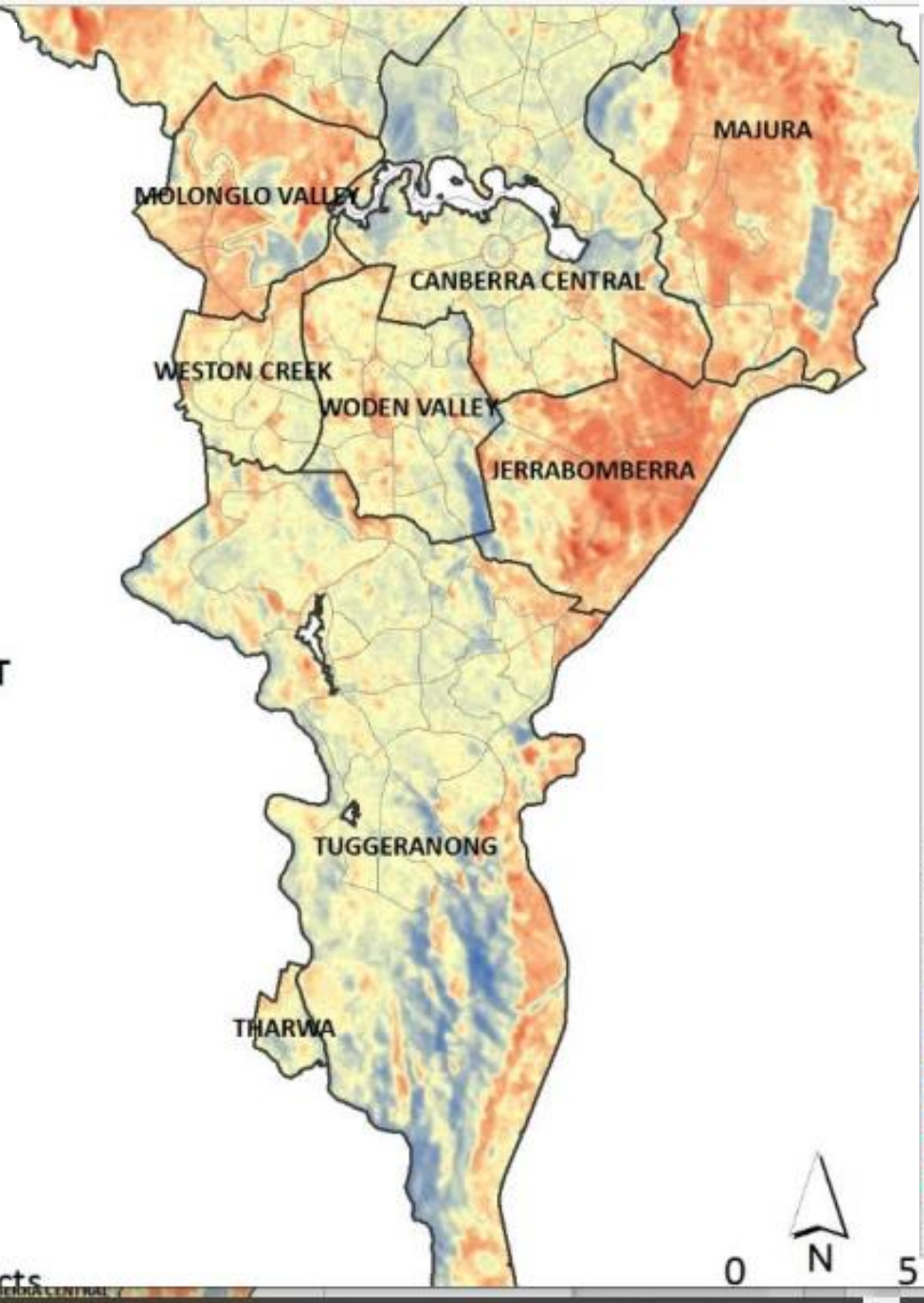
**Public
Housing**



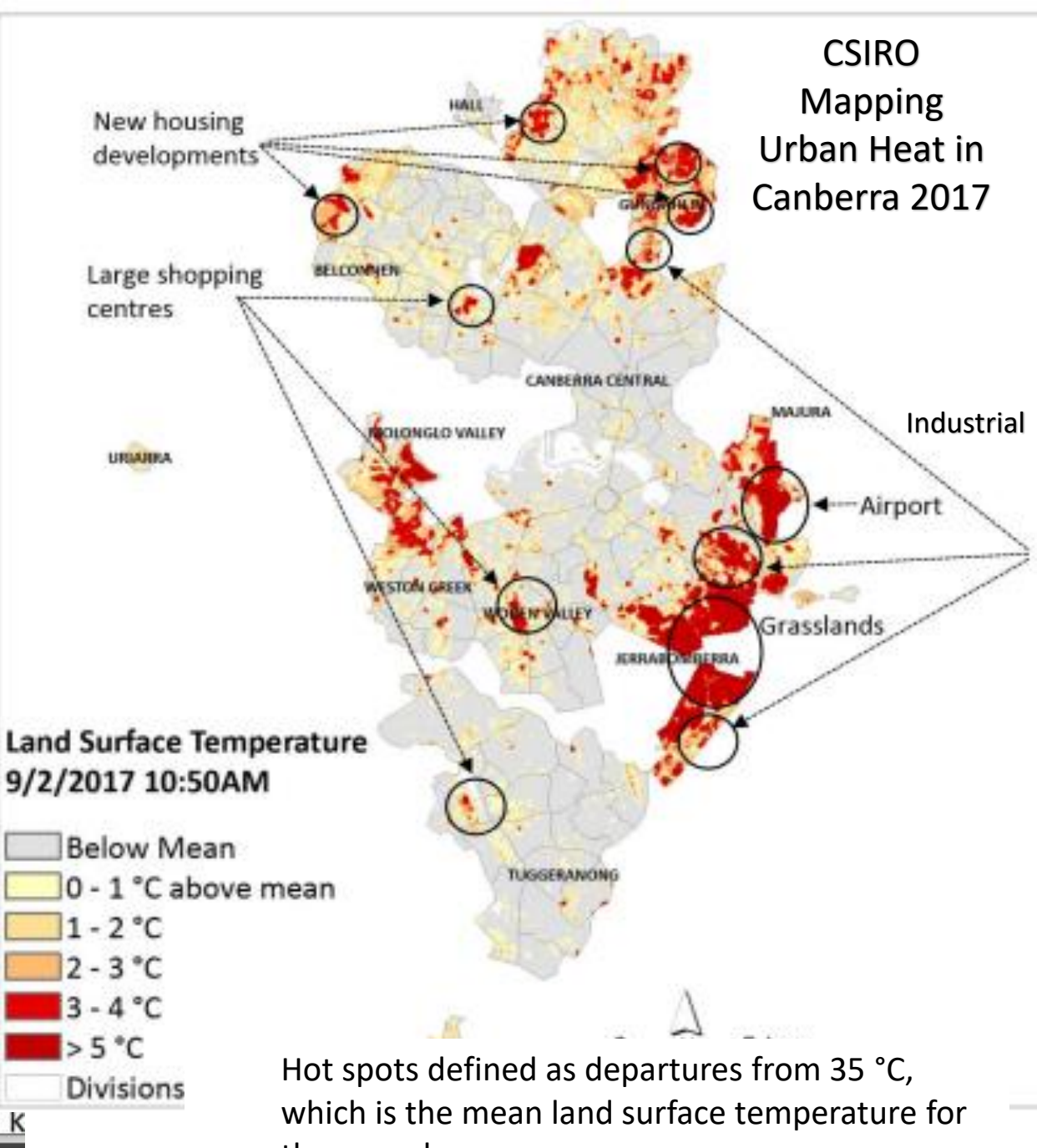
Hemmed in by two sets of public townhouses with virtually no green space, 4 blocks with verdant gardens were covered with concrete for an underground garage and storage. Backyards are covered with paving and either 10 cm of grass or mulch. Cut out for a spindly tree.



CSIRO Mapping
Urban Heat in
Canberra 2017



CSIRO
Mapping
Urban Heat in
Canberra 2017



Hot spots defined as departures from 35 °C, which is the mean land surface temperature for the area shown.

Co-relation between tree cover and land surface temperatures

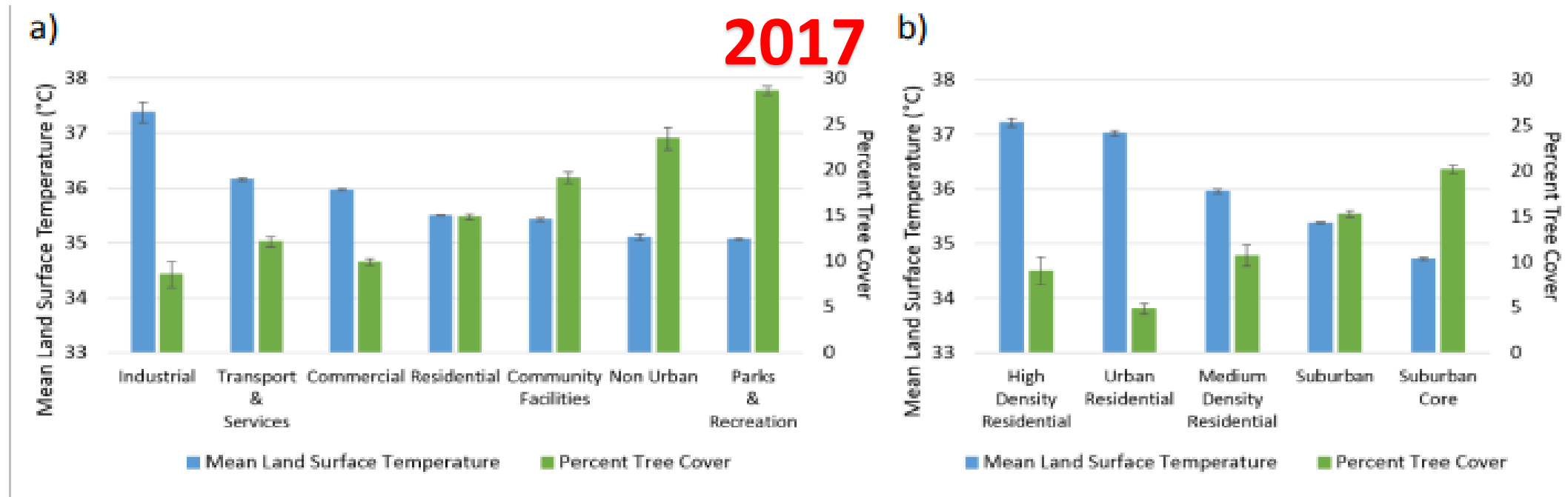


Figure 7. Mean land surface temperatures for Territory Plan land-use zones (blue) and percent tree canopy cover (green) for the metropolitan areas of Canberra. Standard error bars are shown, which is a measure of accuracy of temperature estimates. The temperature data are based on Landsat 8 imagery for 9 February 2017 (10.50 AM DST).

No development without sufficient trees.
No development without current temperature maps.